



Urban Cooling Design

Shaping Cool Cities: Urban Comfort & Climate-Responsive Spaces by Agora Makers



**People
Shaping
Places**

Warming cities call for climate-responsive design strategies



Introduction

01 Parks and Gardens

02 Squares, Streets and Mobility

03 Waterfronts

Our Brands



Climate refuge within the urban fabric

Climate refuge within the urban fabric. As cities heat up, parks and gardens emerge as essential spaces of breath and thermal relief.

Water features, misting systems, shaded structures and furniture in dialogue with vegetation shape places for pause, encounter and contemplation.

By combining comfort, aesthetics and climate performance, we contribute to transforming urban green spaces into living environments — welcoming, resilient and deeply rooted in the experience of urban well-being.



Model "Bojon", City Design

Relax

A landscape to inhabit

These seating elements carve out islands of freshness within the park.

Their light structure defines the line, while wood — warm and naturally adapted to heat — invites touch and slows down the body.

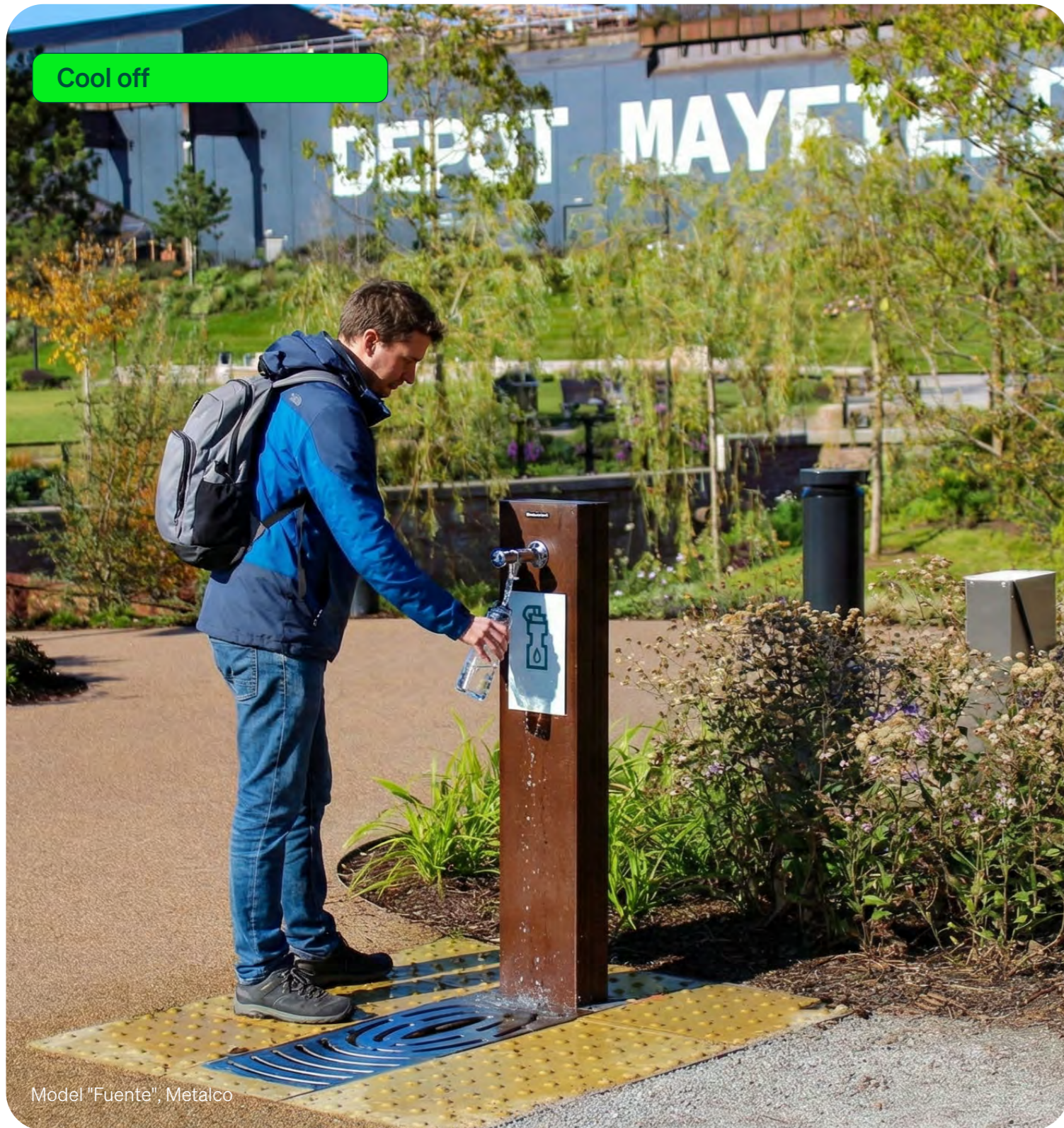
More than furniture, they act as microclimatic devices, shaping a spatial experience designed for summer.

Relaxation



Model «Slice», City Design

Cool off



Model "Fuente", Metalco



Model «O'Claire», Ghm



Learning in the shade

Model «Cison», City Design

At the University campus of Sassari, outdoor space becomes an extension of learning.

Timber structures filter light and define shade, creating a soft microclimate.

Tables organize social and study clusters, turning circulation spaces into places to inhabit — where climate comfort becomes part of the architectural intent.



Model «Fuente Dog», Metalco



Model «Bojon», City Design



Model «Slice», City Design



Model «Cison», City Design



Model «O'Claire», Ghm



Model «Cerro», Metalco



Model «Flore», Ghm



Model «Fuente», Metalco



Model «Twist», Metalco

Do you have a park or green space development project? Let's talk.

Agora Makers creates solutions tailored to your project.

For more information, click here.



Climate comfort & urban conviviality

Squares, streets and city centers concentrate flows, intensity and exposure.

In summer, these mineral environments become highly vulnerable to heat.

Our solutions transform them into climate-responsive spaces. Mist, shade and vegetation temper the atmosphere, while seating introduces moments of pause.

From transit spaces to places of stay, the city becomes once again inhabitable — even in extreme heat.





Modèle «Mirabilis», Metalco

Relax

Greening, everywhere

Mirabilis transforms mineral urban spaces, often exposed to heat and lacking shade, into places of immediate freshness and well-being.

The combination of planter, seating and shading structure creates a space to inhabit, where vegetation reintroduces comfort, use and sensory quality at the heart of the city.



Greening everywhere

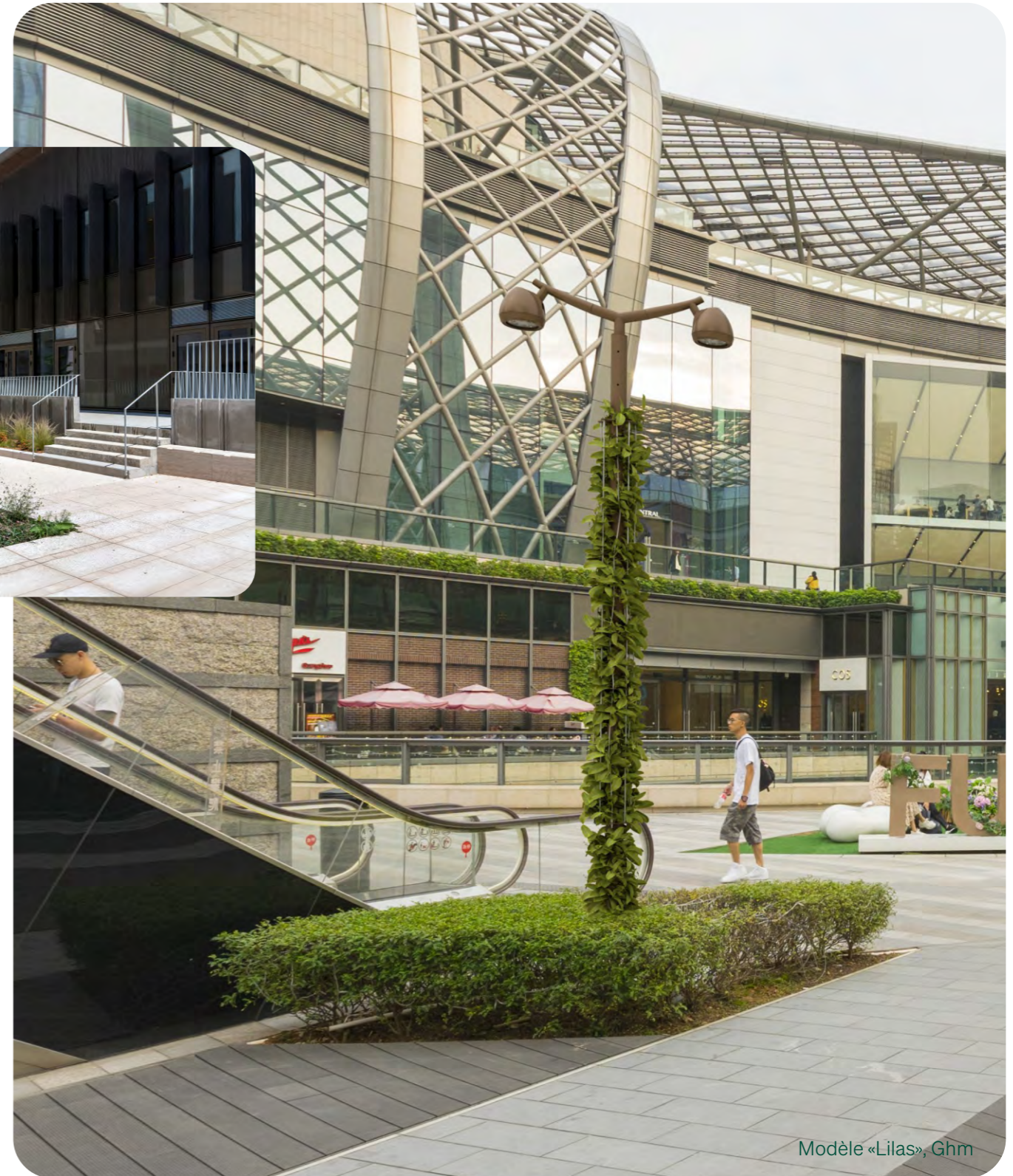
Granum - Design: Mube



Modèle «Lilas», Ghm



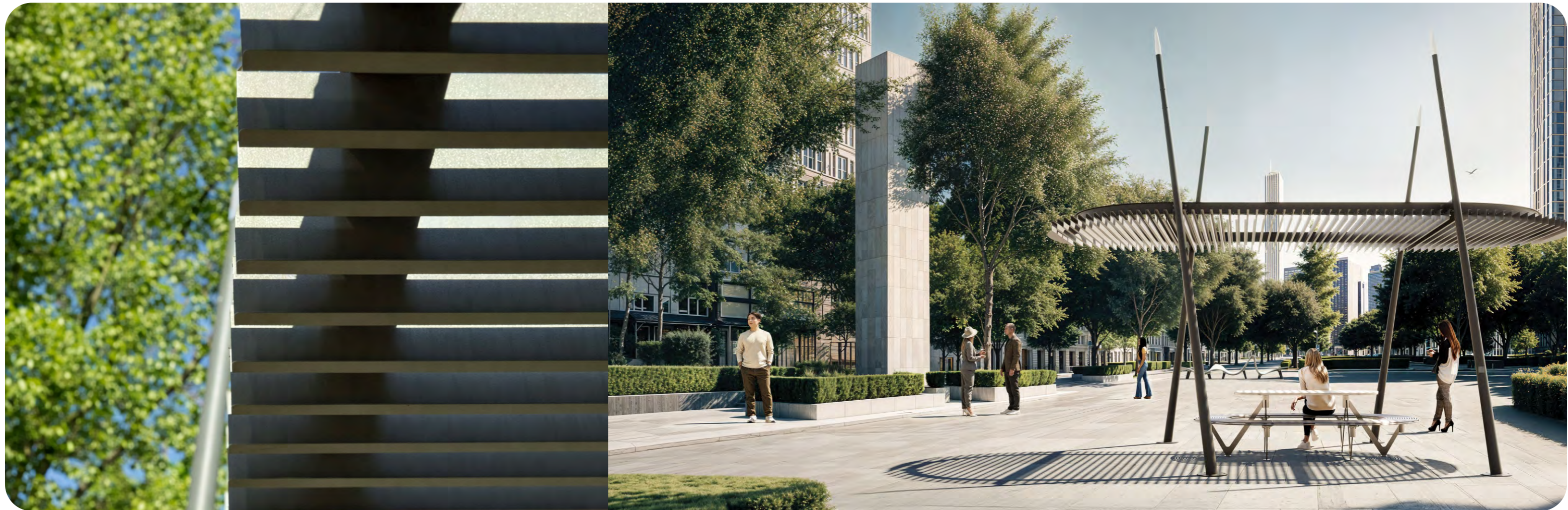
Granum - Design: mube



Modèle «Lilas», Ghm



Model «Lilas», Ghm



Shade

Model «Chiaroscuro», Metalco

Designing shade as urban infrastructure

In Romania, this project reinterprets shading structures as a contemporary urban system.

Simple yet distinctive, they create rhythm across public spaces and pedestrian routes, offering protection, identity and spatial coherence.



Model «Tile», Metalco



Shade

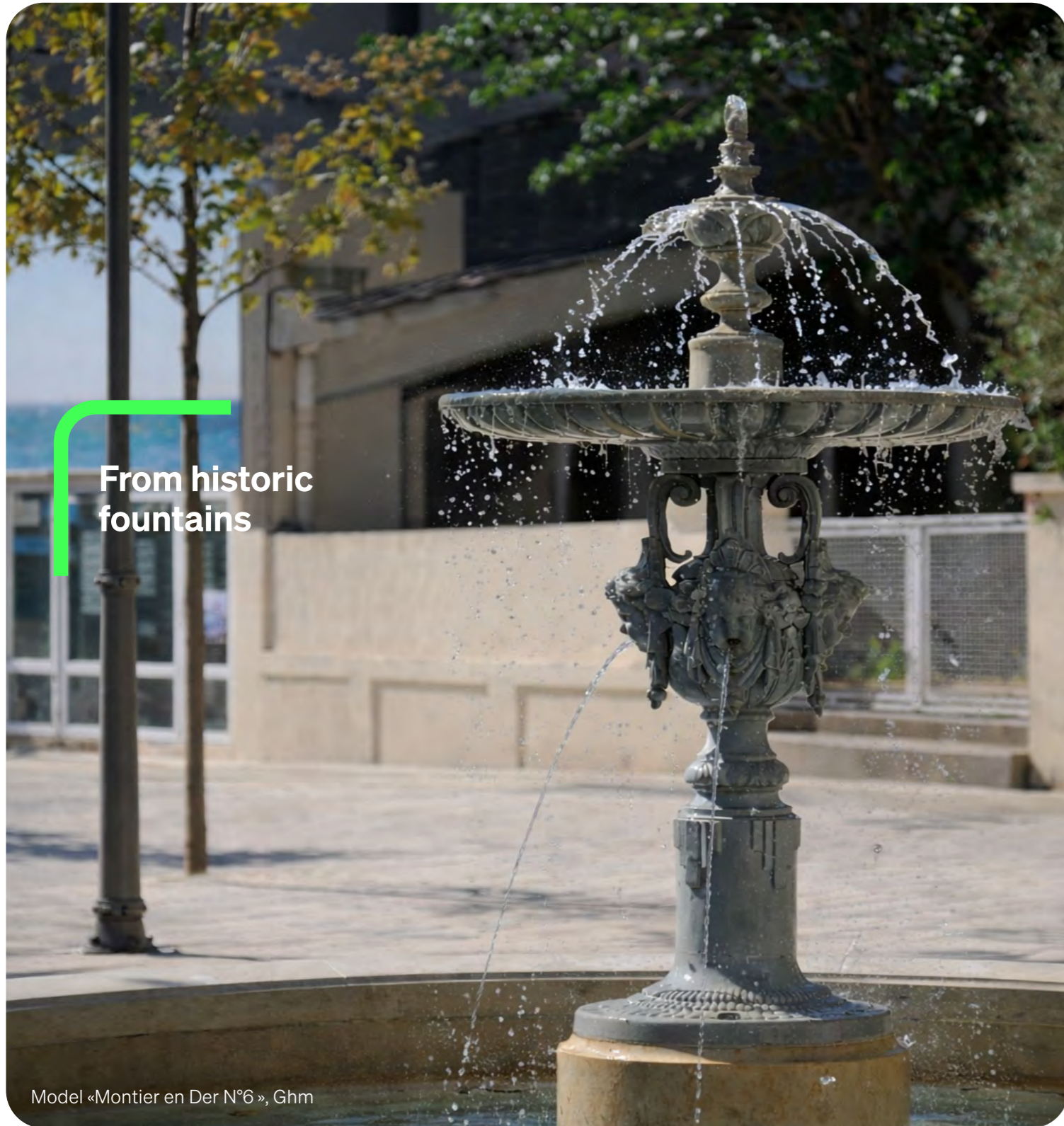
Model «Foglia», Metalco

BRN Village is a redevelopment project dedicated to cycling: 70,000 m² of public open spaces, including 50,000 m² of green areas, with more than 1,000 new trees, 6 cycling paths and nearly 2 km of pedestrian and cycling routes.

Metalco urban furniture enhances the visitor experience with shading solutions that promote relaxation and thermal comfort for users. In this context, FOGLIA canopies create shaded areas with a light, contemporary design, combining a steel structure, the possibility of integrating lighting, and a system designed for rainwater drainage inside the columns.



Model «Petals», Metalco



From historic
fountains

Model «Montier en Der N°6», Ghm



Head equipped with decorative LEDs

Misting system

Push-button
activated taps

emerges a new
urban freshness

Model «Vault», Ghm



An enduring civic icon

An enduring civic icon

The Wallace fountain stands as a timeless piece of civic design.

Carried by four caryatids and cast in iron, it embodies a model conceived in the 19th century to provide free access to water.

Its permanence — in both material and design — resonates with today's sustainable city: creating public objects that endure, transmit and continue to serve.



Between history and urban renewal

Arezzo, Italy
The redevelopment of the gardens in Piazza Matteotti brings new life to this historic early 20th-century site and strengthens the identity of the gateway to the historic center of Castiglion Fiorentino, in Tuscany.

The project clarifies pathways and rest areas by reinterpreting the 1930s layout, thanks to the GRANDIFIORIERE elements that structure the planted areas.



Model «Wallace», Ghm



Model «Mirabilis», Metalco



Model «Petals», Metalco



Granum – Design: Mube



Model «Vaulot», Ghm



Model «Foglia», Metalco



Model «Alterego», Metalco



Model «Lilas», Ghm



Model «Montier-en-Der 1», Ghm



Model «Tile», Metalco



Model «Grandifioriere», Metalco

Do you have a park or green space development project? Let's talk.

Agora Makers creates solutions tailored to your project.

For more information, click here.



A place to slow down

Along the seafront, contemporary loungers invite pause and contemplation.

Here, design aligns with the horizon — turning the waterfront into a space of comfort and quiet intensity.





Model «Clip», Bellitalia

03 Waterfronts

Saint-Pierre-la-Mer: a moment of relaxation on the Mediterranean

Located on the Occitanie coast, Saint-Pierre-la-Mer charms visitors with its long sandy beaches and peaceful atmosphere.

Along the wooden promenade by the sea, contemporary-designed loungers invite people to pause, soak up the sun, and contemplate the horizon.

A place where comfort and natural landscape come together, transforming the seafront into a true space of well-being and conviviality.



Model «Wing», Bellitalia

Concrete in dialogue with water

Along the Danube, near the Duna Arena, Wings benches establish a subtle presence within the mineral landscape.

Concrete, durable and timeless, becomes the natural extension of the riverfront — grounding the project in permanence.



Model «Cison C», City Design

03 Waterfronts

A sculptural oasis

On Estaleirinho beach, this project explores furniture as micro-architecture.

The enveloping form creates shade and social space, while wood — warm and climate-adapted — anchors the project in its tropical context.

03 Waterfronts



Model «Moonstone», Metalco

Summer in color



Model «Stone», Metalco



Model «Splash», Metalco



Model «Wing wood», Bellitalia



Model «Stone», Metalco



Model «Splash», Metalco



Model «Moonstone», Metalco



Model «Twist», Metalco



Model «Clip», Bellitalia



Model «Wing», Bellitalia



Model «Cison CO», City Design



Model «Bojon T», City Design

Do you have a park or green space development project? Let's talk.

Agora Makers creates solutions tailored to your project.

For more information, click here.





Shaping tomorrow's public spaces

Agora Makers brings together leading brands to design and manufacture lighting, urban furniture and smart systems that transform cities. We believe public space is a powerful tool for connection, well-being and resilience.

Through design, engineering and technology, we create places that resonate with people — and endure.

People shaping places. Places shaping people.

Our brands



The strength of a historic leader



Connected lighting



Reinvented urban heritage



Functional lighting



Iconic urban design



Functional and accessible design



Enhanced designer concrete



Next-generation outdoor fitness

CONTACT US +33 (0) 4 67 13 74 74 et contact@agora-mu.fr

**People
Shaping
Places**